

Istra

Unit T39

Water Frontage

Bedrooms 3

Bathrooms 3

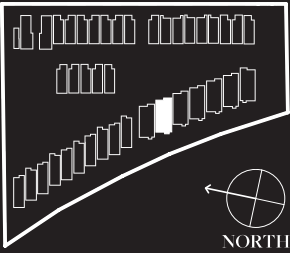
Cars 2

Living Area 115m²

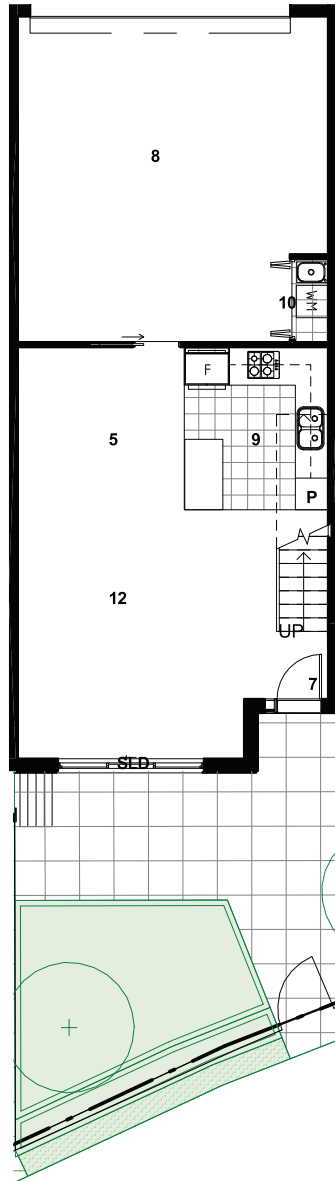
Outdoor Area 35.1m²

Garage Area 36.2m²

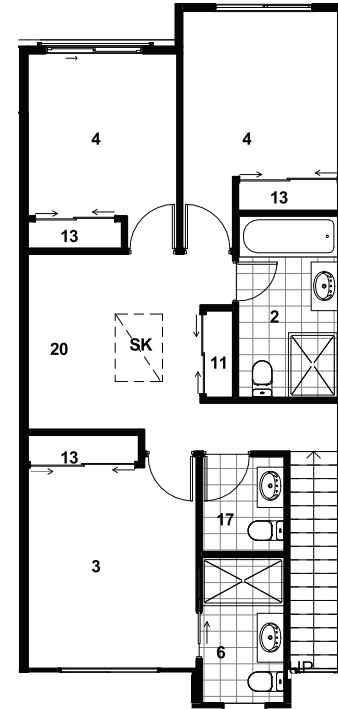
Total Area 186.3m²



LOWER GROUND FLOOR



UPPER GROUND FLOOR



Legend

- | | |
|------------------|-------------------------|
| 1 Balcony/Yard | 12 Living |
| 2 Bathroom | 13 Robe |
| 3 Master Bedroom | 14 Family |
| 4 Bedroom | 15 Study |
| 5 Dining | 16 Walk In Pantry |
| 6 Ensuite | 17 Powder Room |
| 7 Entry | 18 Water Closet |
| 8 Garage | 19 Store |
| 9 Kitchen | 20 Multi Purpose/Rumpus |
| 10 Laundry | 21 Balcony/Wintergarden |
| 11 Linen | 22 Deck |

The floor plan layout may be subject to minor amendments and dimensional changes to suit final working drawings and grid layouts which are subject to the Building Code of Australia. Dimensions shown are to structural faces. The area of each unit is calculated using ACTPLA guidelines. It is the buyers responsibility to verify and ensure that the drawings displayed are the latest versions available. The furniture layout and sizes portrayed in this floor plan are indicative only and should not be relied upon by the buyer. Landscaping is indicative only refer to landscape plan and inclusions for final finishes. MIN EER 6