

Istra

Unit T15

Street Frontage

Bedrooms 3

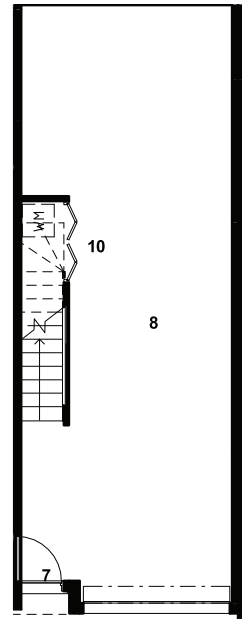
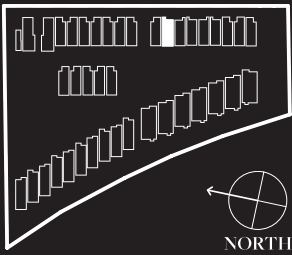
Bathrooms 2

Cars 2

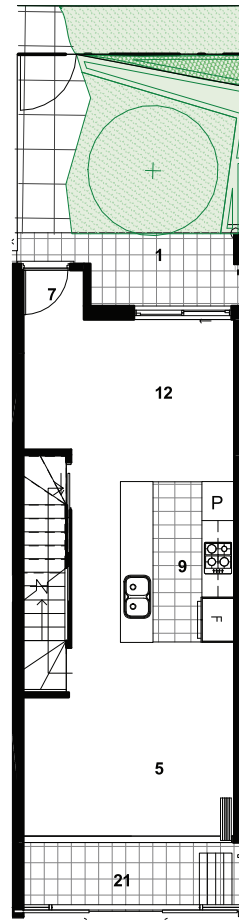
Living Area 96m²

Outdoor Area 36m²

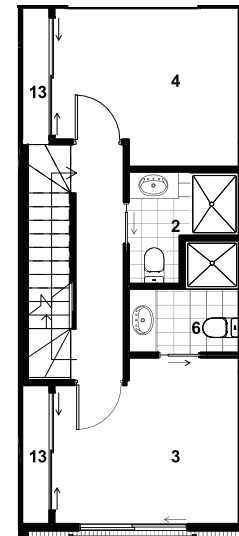
Total Area 176m²



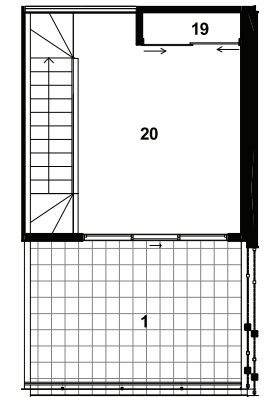
LOWER GROUND FLOOR



UPPER GROUND FLOOR



FIRST FLOOR



SECOND FLOOR

Legend

- | | |
|------------------|-------------------------|
| 1 Balcony/Yard | 12 Living |
| 2 Bathroom | 13 Robe |
| 3 Master Bedroom | 14 Family |
| 4 Bedroom | 15 Study |
| 5 Dining | 16 Walk In Pantry |
| 6 Ensuite | 17 Powder Room |
| 7 Entry | 18 Water Closet |
| 8 Garage | 19 Store |
| 9 Kitchen | 20 Multi Purpose/Rumpus |
| 10 Laundry | 21 Balcony/Wintergarden |
| 11 Linen | 22 Deck |

The floor plan layout may be subject to minor amendments and dimensional changes to suit final working drawings and grid layouts which are subject to the Building Code of Australia. Dimensions shown are to structural faces. The area of each unit is calculated using ACTPLA guidelines. It is the buyers responsibility to verify and ensure that the drawings displayed are the latest versions available. The furniture layout and sizes portrayed in this floor plan are indicative only and should not be relied upon by the buyer. Landscaping is indicative only refer to landscape plan and inclusions for final finishes. MIN EER 6